



Kymera Influx DB Historian Module

User Guide

Table of Contents

Introduction	2
Setup	3
Usage	5

Introduction

The Kymera Influx DB Historian module allows Ignition to store tag history to an Influx database.

The module provides Ignition users a purpose-built time series database, and offers better performance compared to traditional storage platforms because of InfluxDB's ability to handle high write and query loads.

Setup

This module requires a running InfluxDB server, accessible to the Ignition server. The download for InfluxDB, as well as further documentation on how to set up the server, can be found at <https://www.influxdata.com>.

After the module is installed, a new historical provider will be available under the **Tags>History** menu in the Configure section.

Click on "Create a new Historical Tag Provider".

Select the Kymera InfluxDB provider and click "Next". The initial settings for a new historical tag provider are prepopulated, but they can be modified. The following properties are available at creation:

Main

Provider Name	The name of the provider. It's best if a unique one is chosen.
---------------	--

Influx Connection Settings

Influx Server Address	The full URL of the Influx server, including the port number.
-----------------------	---

User name	If authentication is required for the Influx server, enter the user name here. Otherwise, set to "user".
-----------	--

Password	If authentication is required for the Influx server, enter the password here. Otherwise, set to "password".
----------	---

Storage Options

Write time	Max amount of time a record is allowed to spend in memory, in milliseconds. Default set to 10000.
------------	---

Write size	Max number of records that can be written each time, either to the tape store or to the Influx DB. Default set to 20000.
------------	--

Max Number of Records in Memory	Max number of records allowed in memory at a time. Default set to 25000.
---------------------------------	--

Compress Tag Quality Data	Option to compress the tag quality data. Initial tag quality is stored, but unless a quality change occurs, the quality column remains blank. If set to true, storage performance will improve. Default set to false.
---------------------------	---

Influx Batching Options

Retention Policy	Sets the retention policy to use for the Influx database. Suggested policy is "autogen".
Max Points Per Batch	Max number of points in each Influx storage batch. Default set to 25000.
Flush Frequency	How often the data is pushed to the Influx database. Default set to 1000ms.
Ping Frequency	How often to check authentication credentials. Default set to 1000ms.

Finalize the creation of the provider by clicking the "Create New Historical Provider" button at the bottom.

Usage

After creating the tag provider, it can be selected like any other history provider in the Designer. Double click on the tag, or right click on the tag and select "Edit tag".

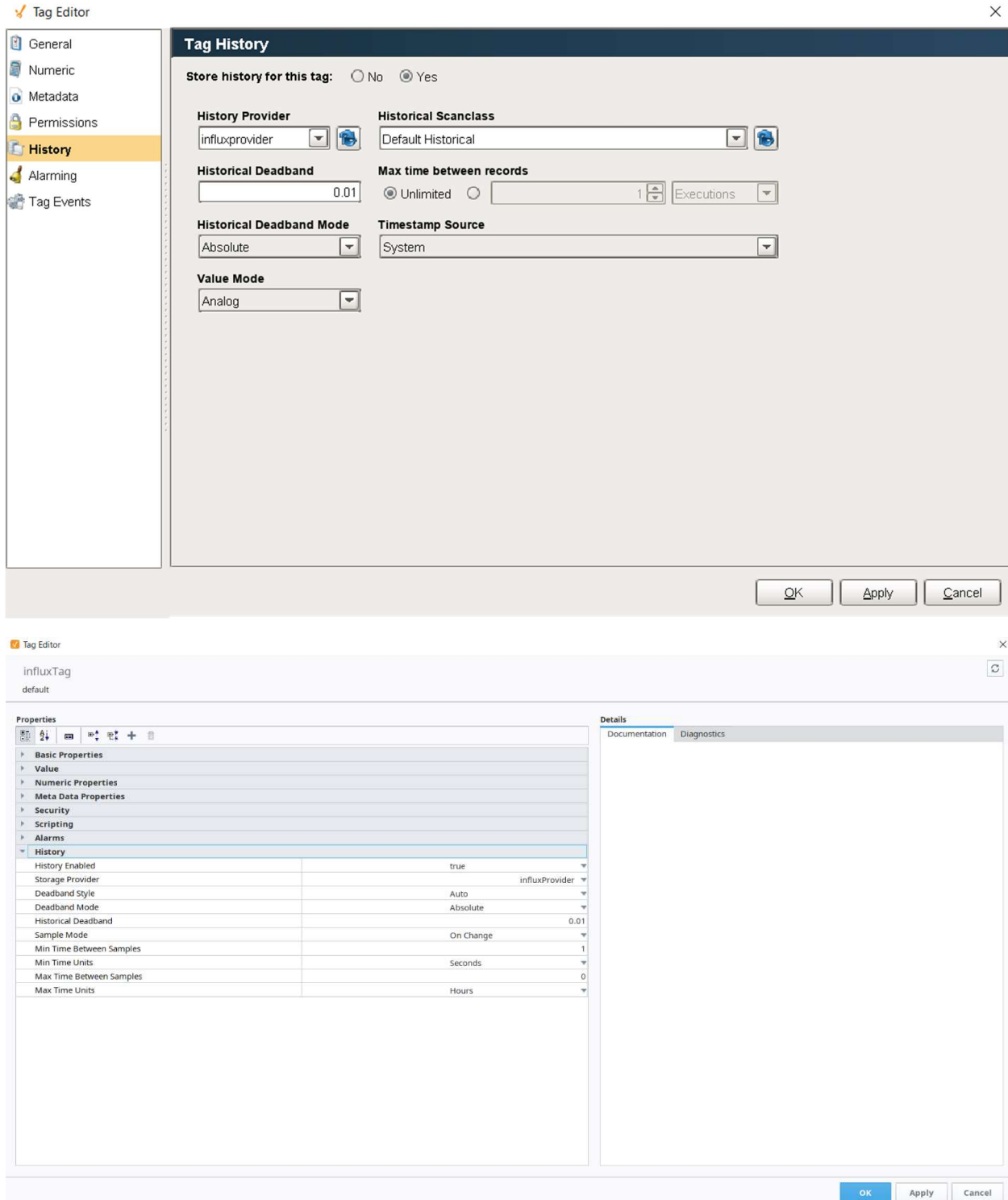


Fig. 1: Setting up tag history in Ignition 7.9 and 8.0

1 800 479 2302

www.kymerasystems.com

After recording any historical tag data, the tag data will be visible Easy Chart components...

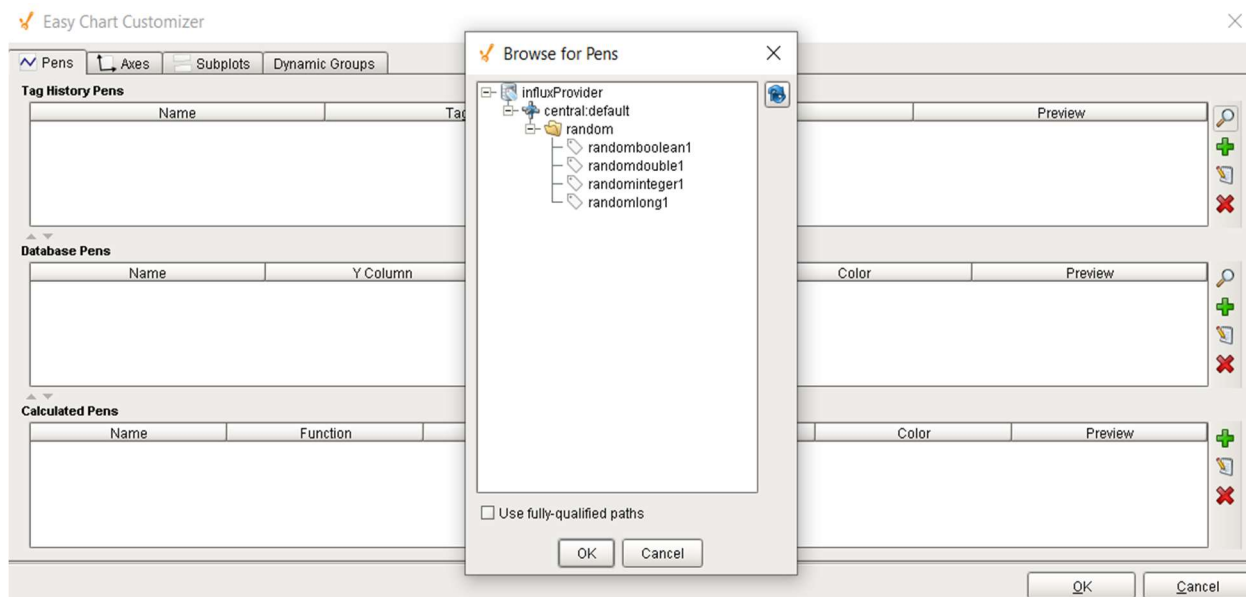
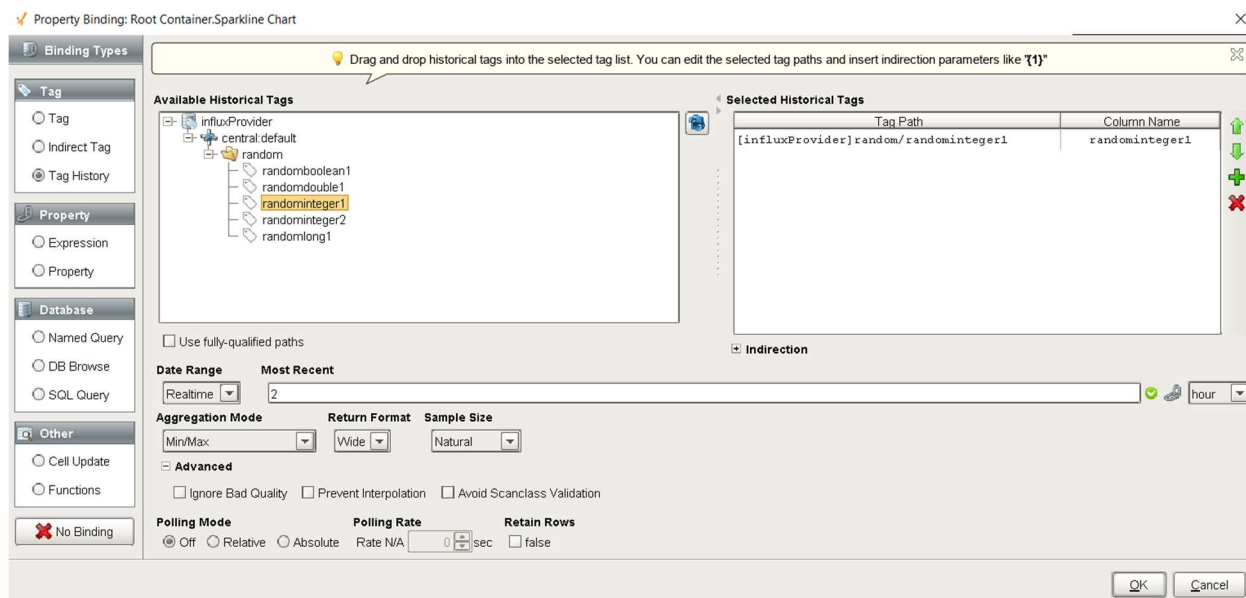


Fig. 2: Browsing Influx tag historian using Easy Chart

as well as any components or properties that use tag history bindings, like Sparkline Charts or tables.



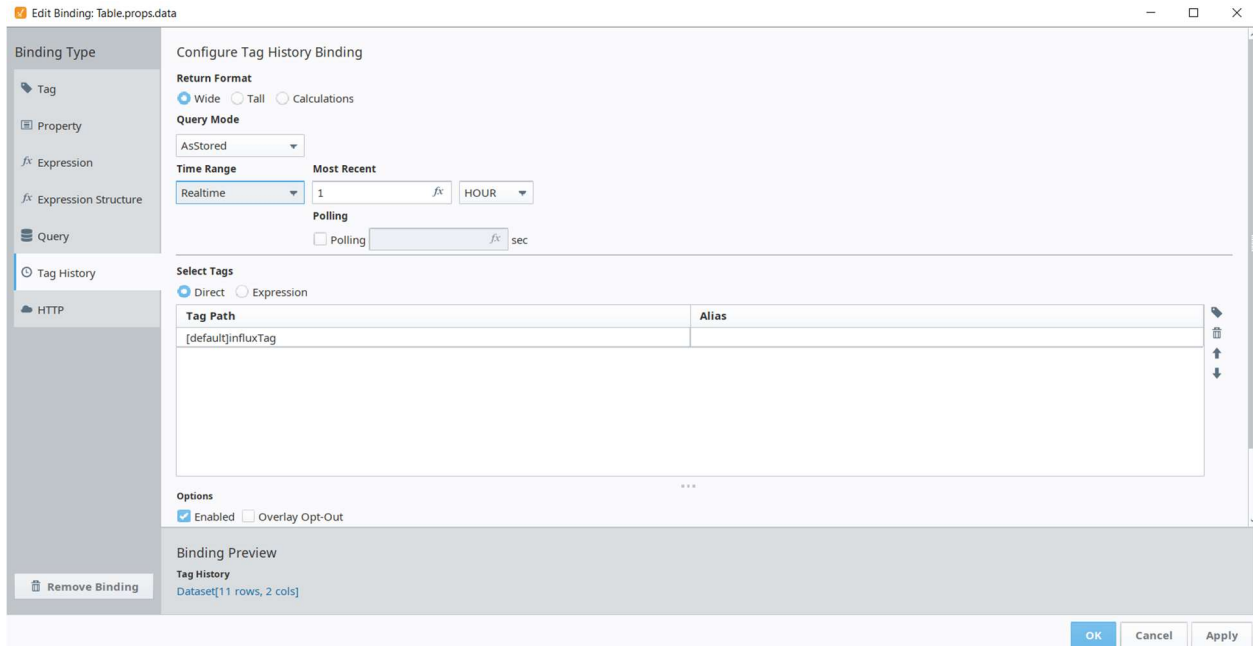


Fig. 3: Browsing Influx tag historian using tag history binding in Ignition 7.9 and 8.0